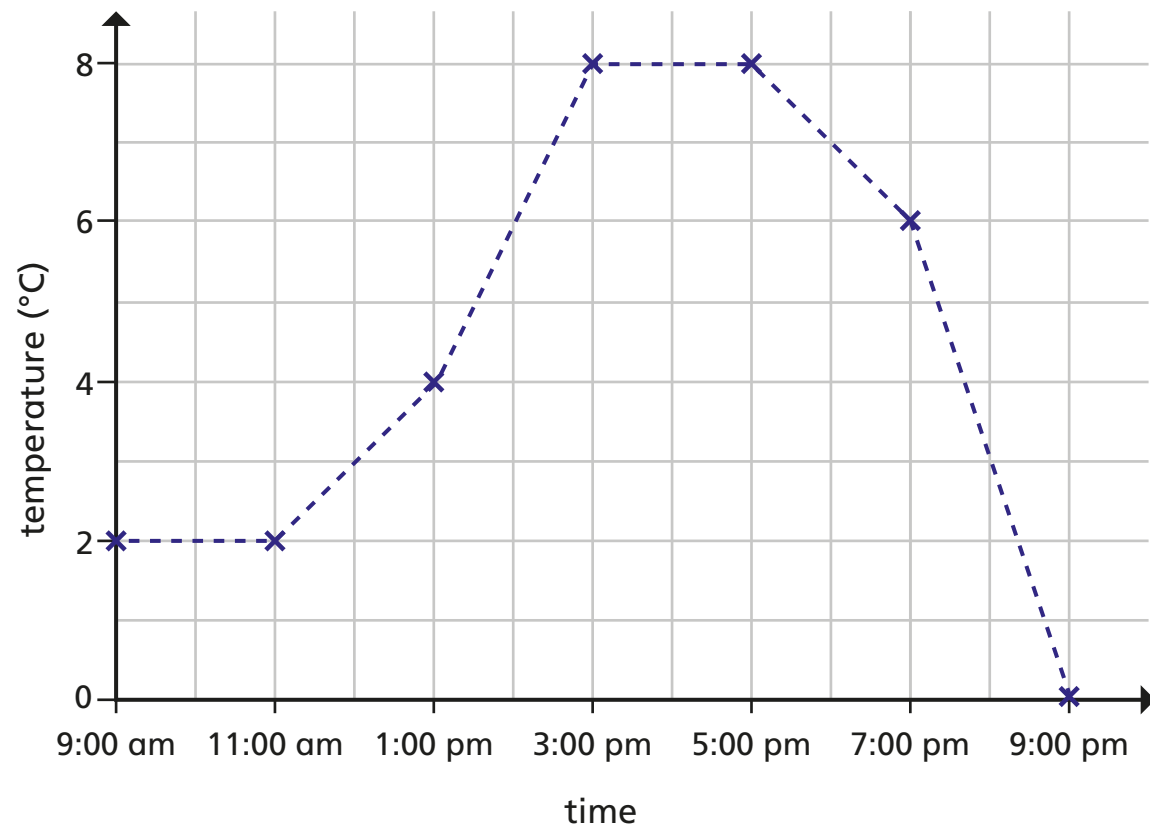


Read and interpret line graphs

1 The graph shows the temperature in Birmingham on one day.

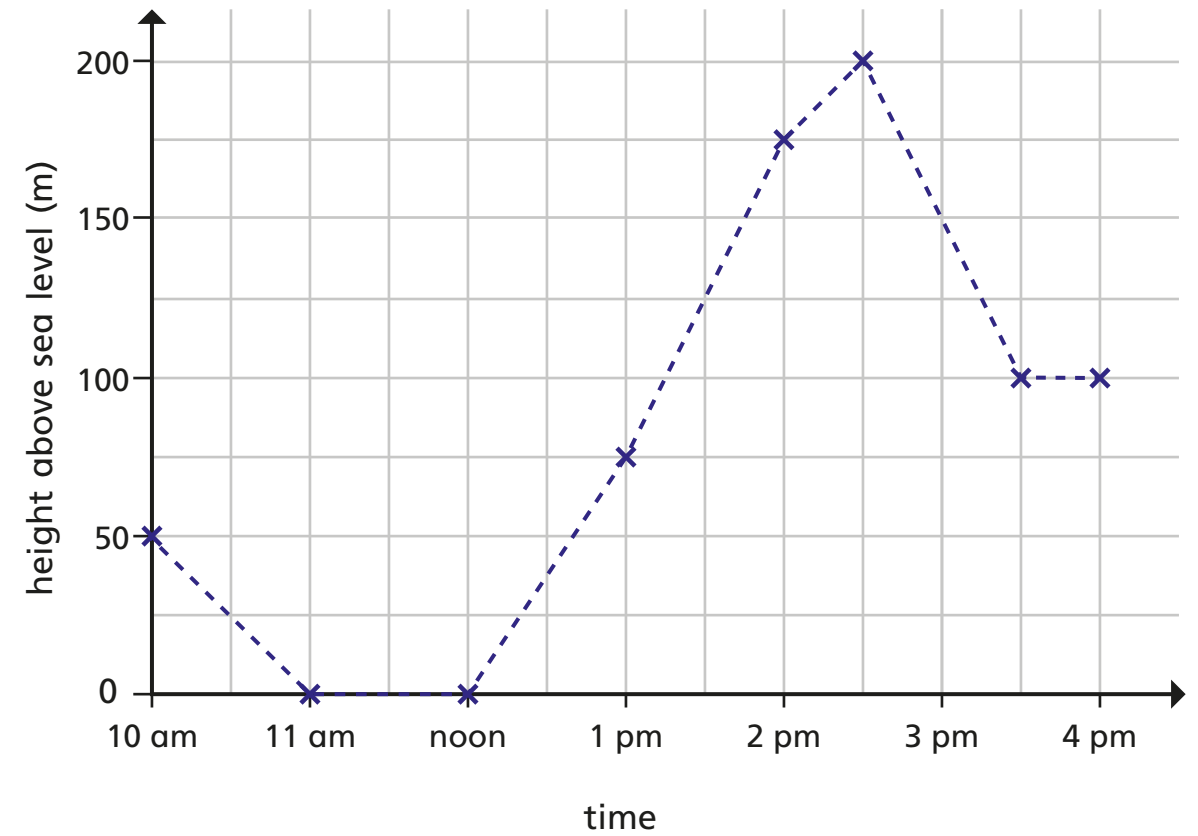


- a) What was the temperature at 1:00 pm?
- b) What was the difference in temperature between 11:00 am and 1:00 pm?
- c) Between which times was the temperature increasing?

- d) How often was the temperature recorded?

2 Aisha goes for a walk.

The graph shows the height above sea level during her walk.



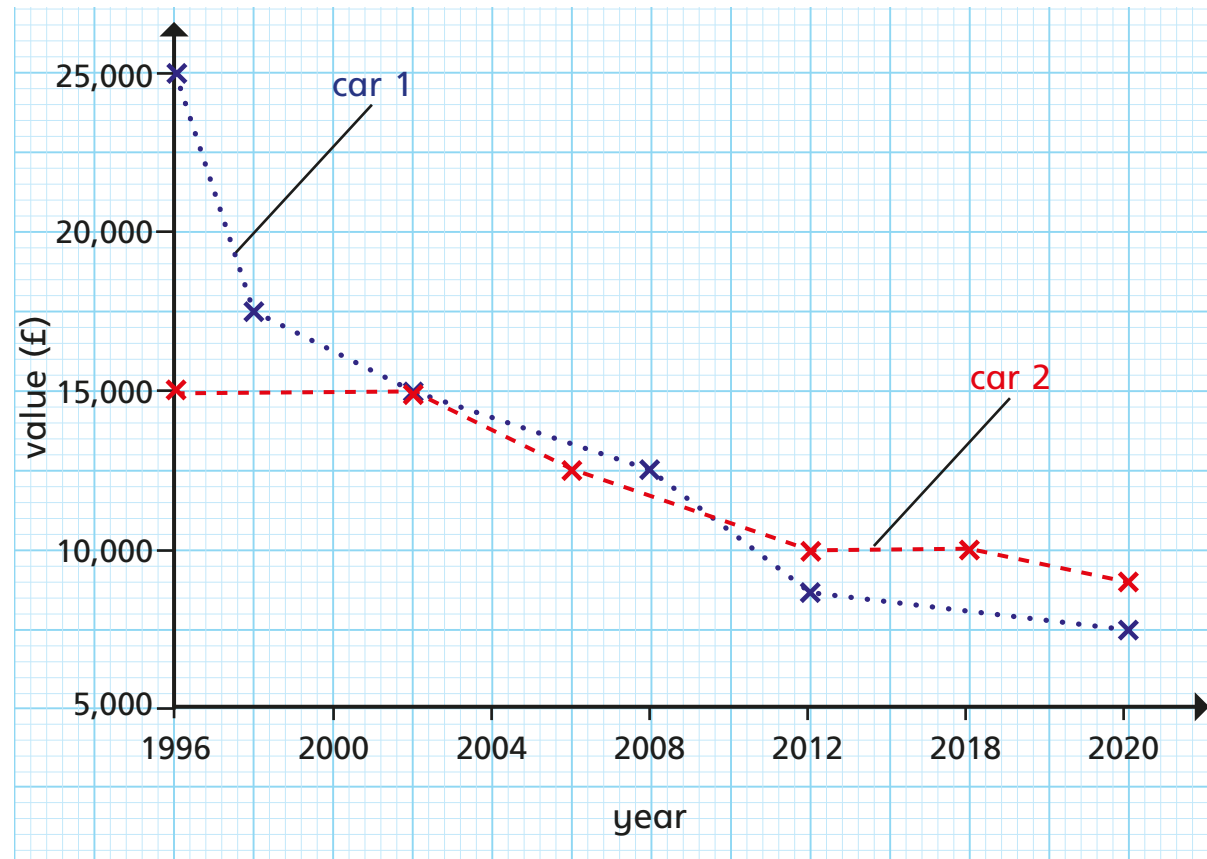
- a) What was the height above sea level where Aisha was walking at 2 pm?
- b) At what time in Aisha's walk was she standing 200 m above sea level?

c) Part of the walk was along a beach.
Between which times did Aisha walk along the beach?

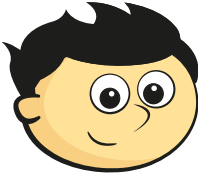
How do you know? Talk about it with a partner.

- d) Did the walk start and finish in the same place?
Explain how you know.

3 The graph shows the values of two cars over time.



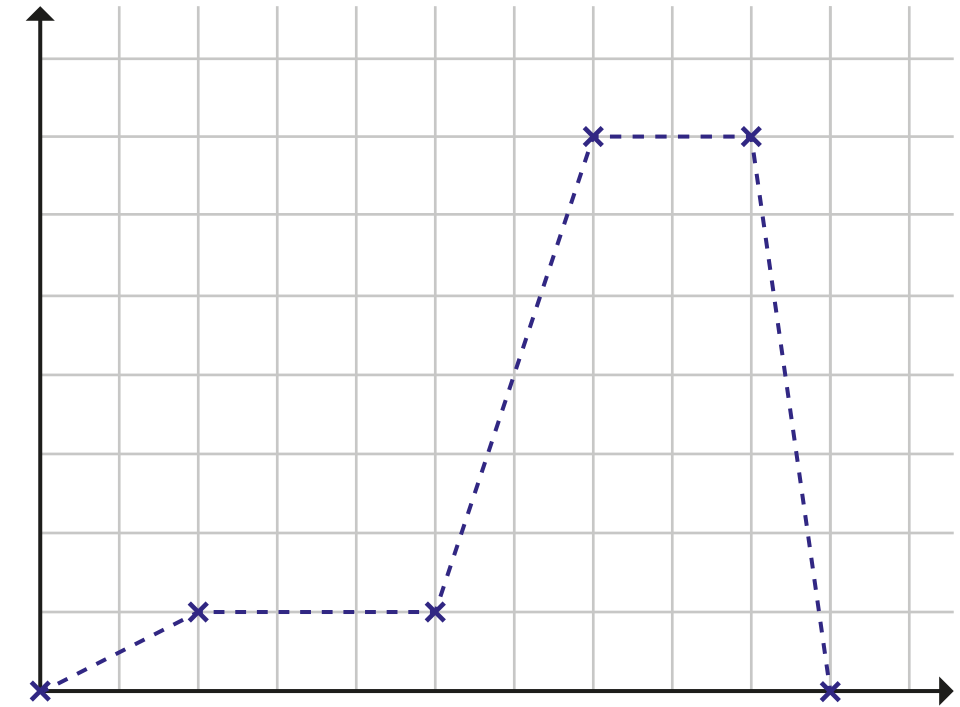
- a) In which year was the recorded value of the cars the same?
- b) In which two years was the difference in the recorded values of the two cars the same? _____
- c) Which car's value decreased the most between 1996 and 2020? _____
- d) For approximately how many years was the value of car 2 greater than the value of car 1? approximately years

e)  The value of car 2 halved between 1996 and 2012

Do you agree with Jack? _____

Explain your answer.

4 Here is a line graph.



- a) What could be happening in the graph?
Write a story to match it.

- b) What would the x -axis be labelled for your story?

- c) What would the y -axis be labelled for your story?

- d) Write two questions that you could ask a partner about your story.

